

## Technical Specifications Barney Danson Theatre



*Photo : Marie-Andrée Blais*



The Barney Danson Theatre is a multipurpose and multifunctional space. It is equipped with cutting-edge audio, lighting and video technology, and can be used as a conventional theatre, a lecture hall, or a banquet hall. To make this possible, the room is equipped with a movable proscenium arch, a modular and collapsible stage, and retractable bleacher-style seating.

*The information in this document is subject to change without notice.*

## Venue Description

### Total Area

- 3,900 ft<sup>2</sup>/1,188 m<sup>2</sup>
- Sealed (varnished) concrete floor

### Maximum Capacity

- 231 - theatre configuration with bleacher seating
- 280 - theatre configuration – floor level seating
- 200 - sit-down banquet
- 250 - stand-up cocktail

### Control Booth (sound, lighting and video projection)

- The control booth is located across from the stage, 17.3 metres (57') from the upstage wall, on the second level at an elevation of 3.53 metres (11' 6').

### Access for people with reduced mobility

- The space is located on the Museum's main floor, at ground level.
- A portable ramp can be installed to provide access to the stage, upon prior notice.

### Assistive listening system for people with a hearing impairment

- The Theatre broadcasts a continuous signal on FM frequencies.

### Access to internet

- The building is equipped with a public continuous WIFI signal.
- A private WIFI network is available.
- It is also possible to install a wired connection upon prior request.

### Simultaneous Interpretation

- A permanent booth with view of the stage is available on the second floor, besides the control booth. Not accessible for people using an assisted mobility device.
- The room can accommodate 2 people.
- The Museum does not provide simultaneous interpretation, or the specific equipment needed for it.
- The room is equipped with permanent in / out audio connections with the control booth.

### Green Room

- Room located at ground level behind the stage and can accommodate 10 to 12 people.
- Furnished with couches and tables, 1 private washroom with shower, a small refrigerator, a makeup area for 2 people, and an iron and ironing board.
- The green room allows access to both sides of the stage/hall.

### Proscenium Arch

- The hall is equipped with a movable proscenium arch, made of light-coloured natural wood.
- Control: Inside the arch, stage left.
- Dimensions:
  - Individual vertical panel width: 2,007m (79"), Thickness: 48cm (18 7/8")
  - Total Width: 13.89 m (45' 6"); Height: 5.15 m (22' 8")
  - Opening: **Width:** 9.85 m (32' 4.5"); **Height:** 5.15m (17' 6")
  - In retracted position: 1.03 m (3' 5") from upstage wall.
  - In fully extended position: 5.05 m (16') from upstage wall.
  - Middle position - default: 2,88m (9' 5,5") from upstage wall.
  - Movable distance from back to front: 4.15 m (12'7")

**Stage – Modular and removable**

- Composed of *Wenger Versalite*® risers (standard surface), 1.22 m x 2.44 m (4'x8') each
- Standard dimensions:
  - **Width** : 7,31m (24')
  - **Depth** : 3,65m (12')
  - **Height** : 0,61m (24")
- Max dimensions (no wing space):
  - **Width** : 9,75m (32')
  - **Depth** : 4,87m (16')
  - **Height** : 0,61m (24")
- Portable stair units with handrails on each side, and a guard rail all around the stage.
- Wing space on each side: 2,43m (8')
- Distance from the front edge of the stage to the control booth 12.49m (41').
- Distance from the front edge of the stage to the bleachers: 4.27m (14').

**Battens – accessible with scissor lift only**

- Total: 7 single fixed battens
- Height of battens
  - above stage area: 6.75 m (22')
  - above house area : 7.36 m (24')
- Maximum equipment load: 11.4 kg (25 lbs) per linear foot
- Length of battens before the proscenium area 18.3m (60')
- Length of battens inside the proscenium arch: 13.41m (44')
- Diameter of battens: 3.7cm (1.5")

**Curtains - permanent**

- Main curtain: motorized, control from the proscenium arch, stage right.  
Material: black and beige Saltex polyester/polyacrylic with felt backing. 225% fullness.
- Backdrop: Pleated black velour. Centre opening, manual control in stage right wing
- German legs on rails: Straight black velour. 1 per side. 5.17m H x 4.55m W (17' H x 15' W)
- The hall has 3 pairs of black velour, removable acoustical borders at ceiling height.

**Electrical distribution – 15 amps**

- Backstage wall, wings: 7 outlets / 5 x ind. circuits (3 Stage left, 4 stage right, 2 paired in parallel)
- Back of House: 6 outlets / 3 x ind. circuits (3 on each side, all paired in parallel)

**Auxiliary Power**

- Stage right, back wall: 3 phases 100A 120/208V - Hubbell CEE connector
- Tech storage area: 3 phases 100A 120/208V - Hubbell CEE connector

## Technical Equipment

The space is fitted with state-of-the-art permanent technical equipment. We also have a wide range of portable equipment which can be used in the hall, depending on availability.

### Sound

- Console : Midas M32 – 32 inputs, 8 outputs
- Media Player: Denon DN-300Z (CD,SD,USB,FM)
- Speakers
  - PA: 3 x amplified Meyer UPJ-1P - installed in the proscenium arch (Centre + L+R)
  - Subwoofers: 2 x Meyer USW-1P -1 per side of the stage, on the floor
  - 5.1 digital surround sound: 10 x JBL 8340, 3 per side, 4 at the back of the audience
- Surround sound decoder: Lexicon MC12
- Stage connections: 24 XLR inputs per side

### Lighting

- Console : ETC Ion XE + Eos fader wing - 20 faders and command buttons
- Dimmers: Strand SLD - 185 x 2.4 kW dimmers
- Fixed Fixtures (see Default Lighting plot for details)
  - 21 x ETC ColorSource Spot V – distributed in various positions
  - 14 x ETC ColorSource Fresnel V – distributed in various positions
  - 4 x Martin ERA 400 profiles – fixed position in the FOH
- House lights: 7 dimmable and independent rows
- Limited range of Roscolux colours
- Limited selection of Type B Gobos

### Video

- Projector - fixed installation in the Tech booth: Eiki EK-1000LU – Laser, 10 000 Lumens, 4K ability
- Zoom lens: Eiki AH-EC24010 – Ratio: 2.99-5.93 :1
- Distance of lens to the screen: 17.37 m (57')
- Type of screen: Da-Lite (18' W x 10' H) – permanent installation behind the backdrop
- Variable aspect ratio masking: 16:9 and 4:3
- Fixed height of screen's bottom edge: 1.22m (4') from the stage, 1.82 m (6') from finished floor
- Video Switcher: Roland VR4-HD – 4 HDMI inputs – 1 primary output + 1 preview output
- Digital 5.1 surround sound system

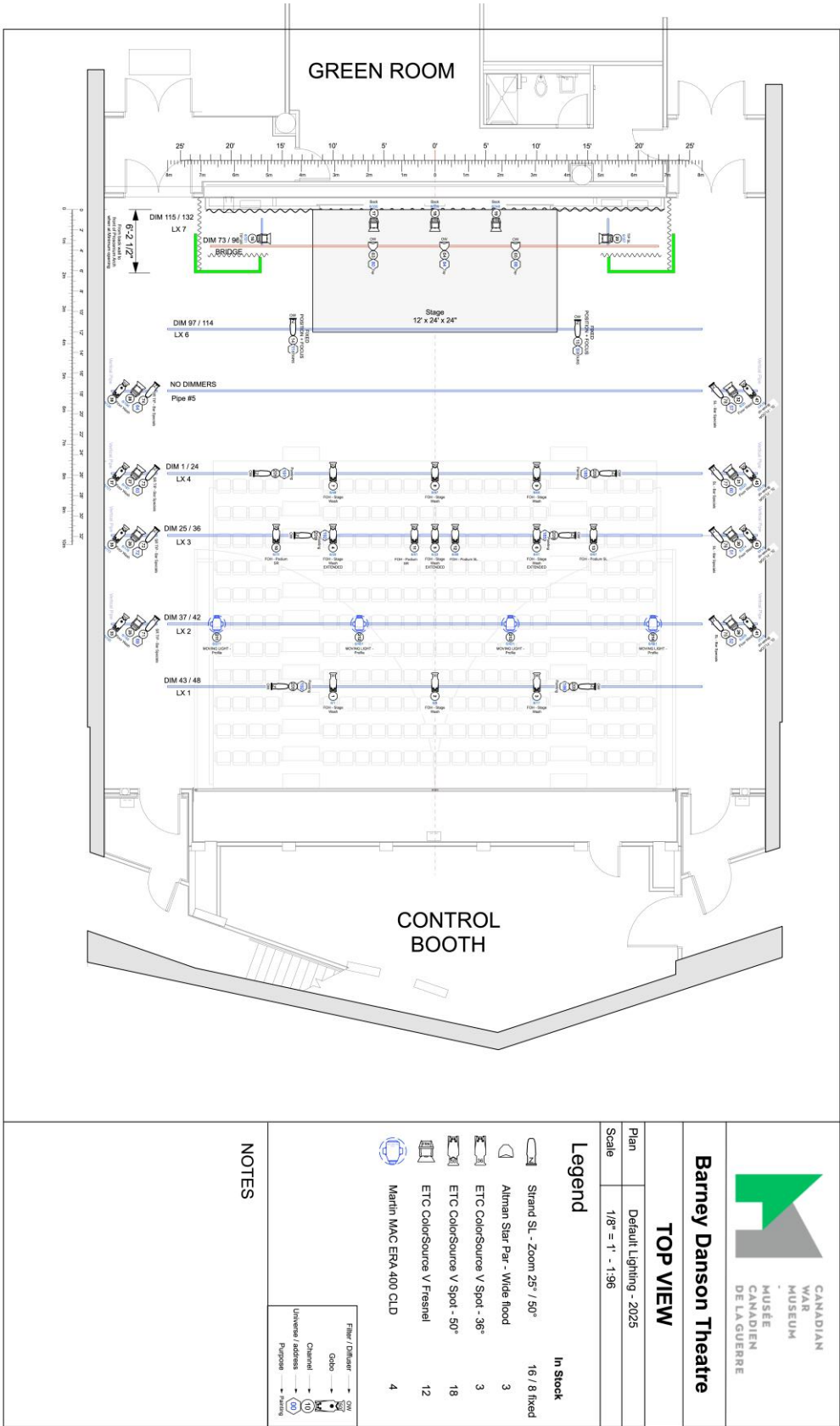
### Communications System

- Full system available – Wired (*Clear-Com* ©) or wireless (*Pliant* ©)
- Fees applicable to the use of wireless units

### Other available items

- Small wooden lecterns with microphone – **Sound-Craft - The Club - LC\_CS Solid Wood Front**
- Large wooden lecterns with microphone – **Sound-Craft - The Keynote – LE\_SB Standard Base**

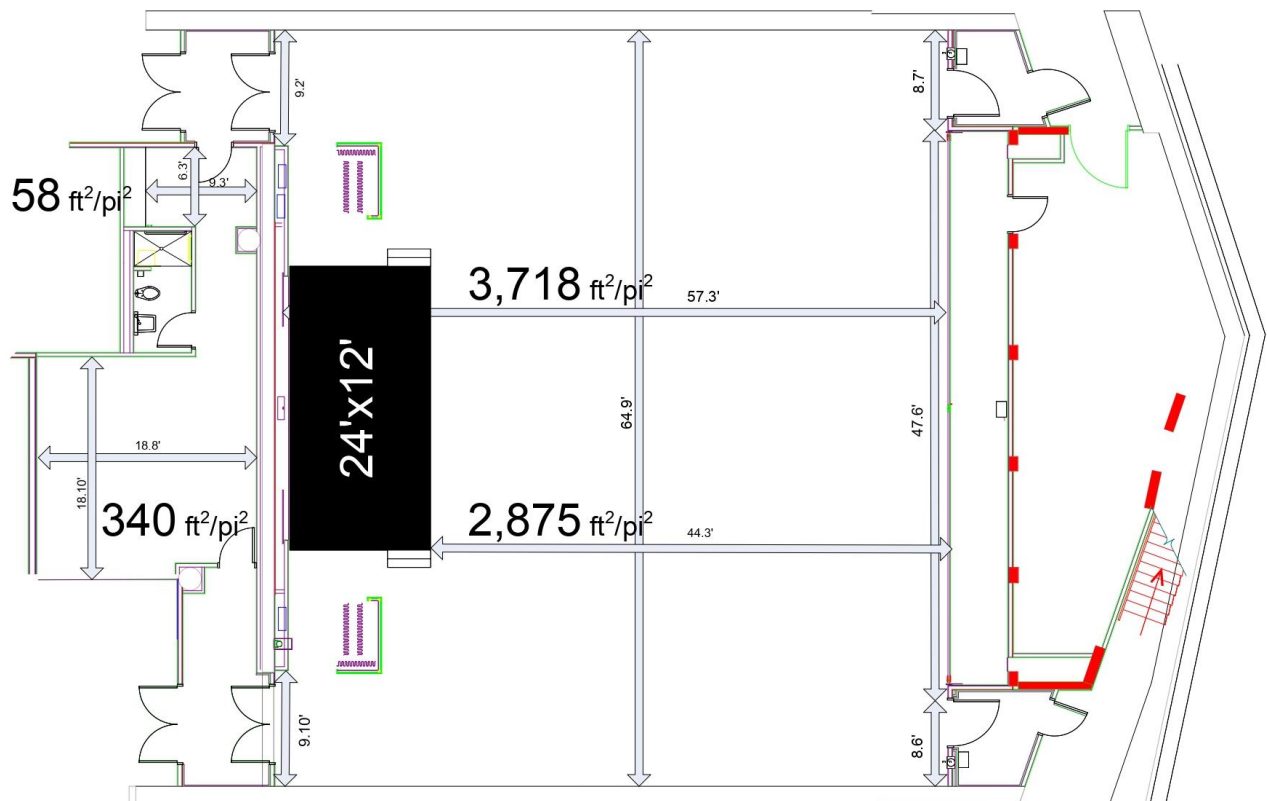
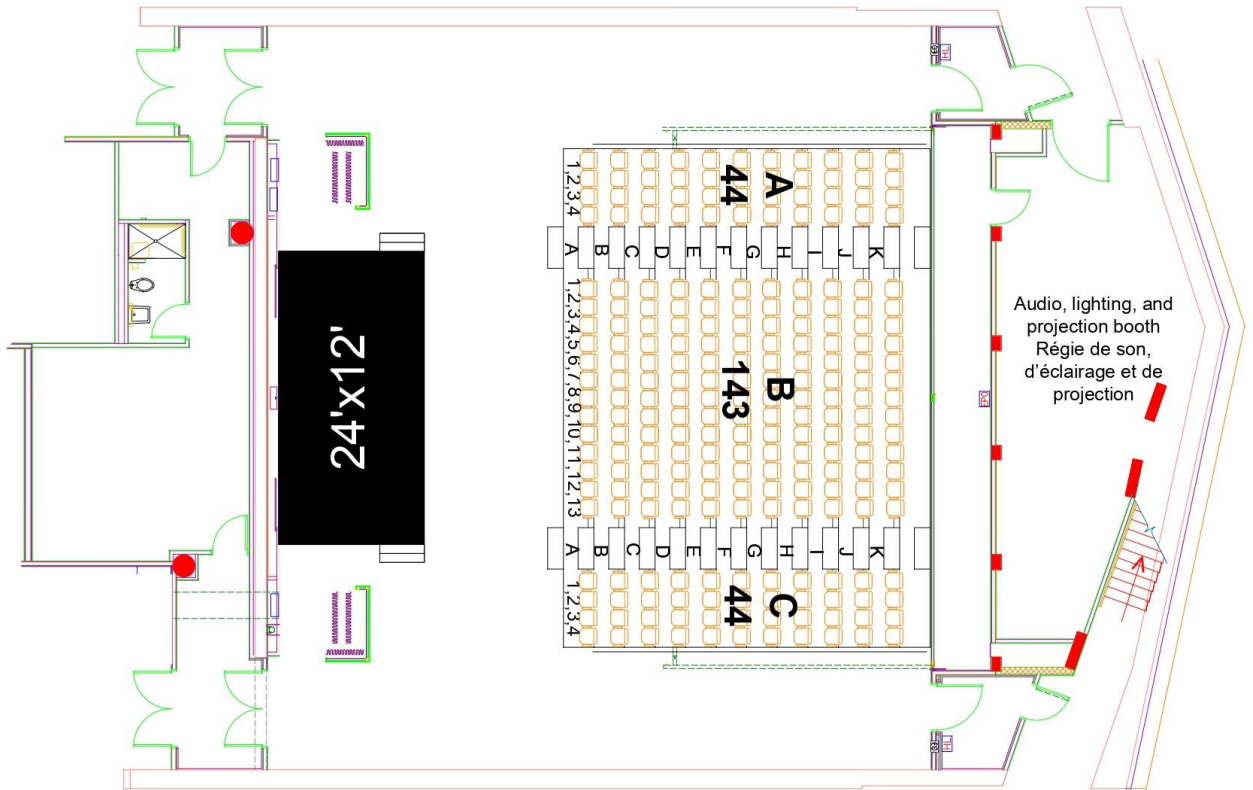
# Default Lighting Plot



### Section View

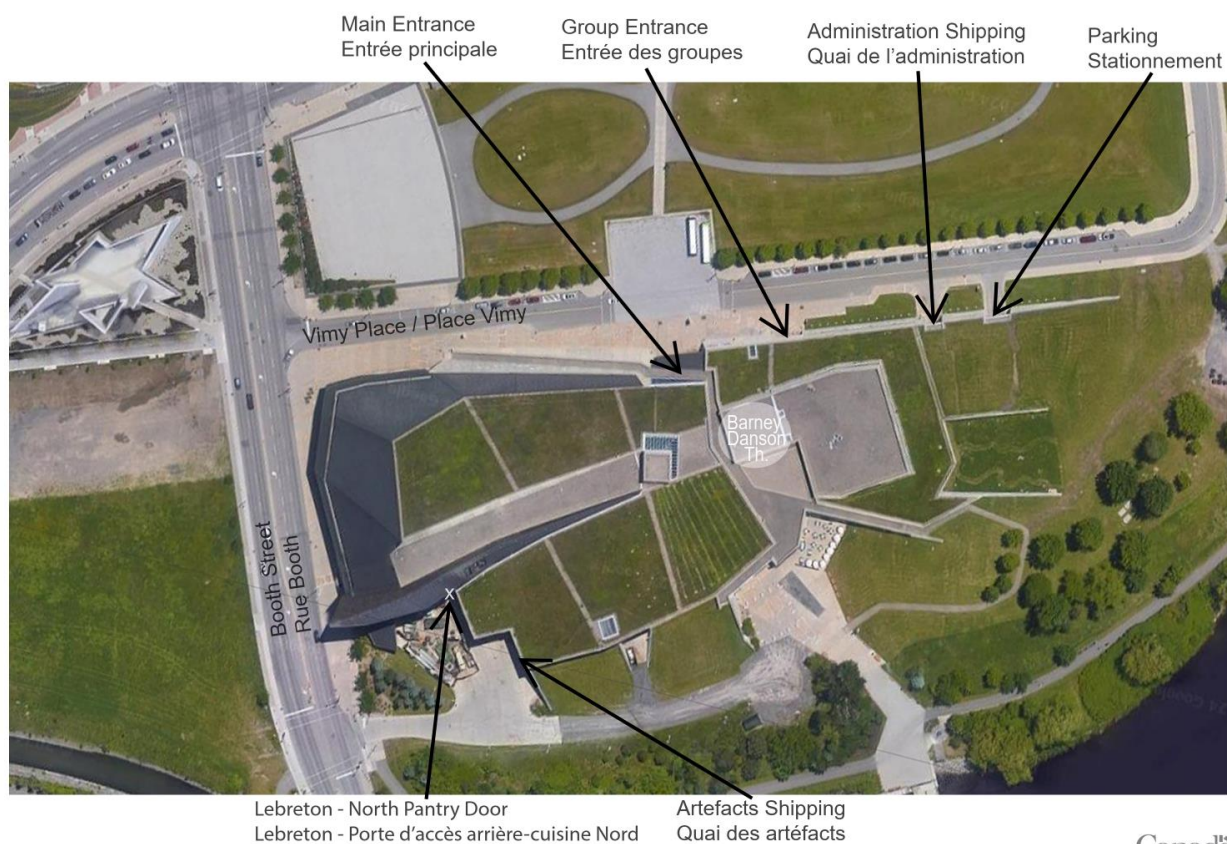


## Bleachers and Dimensions





## Site Map



Canada